

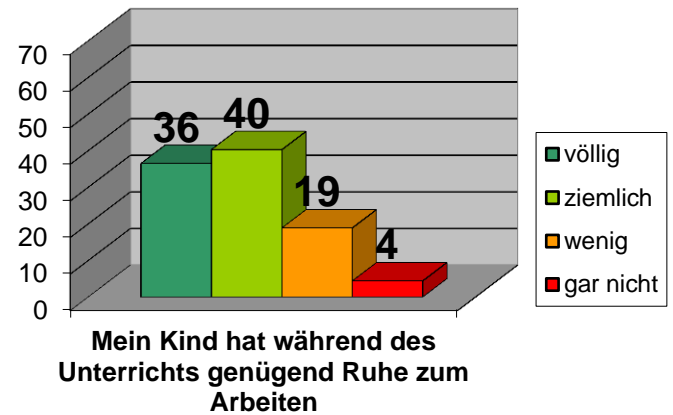
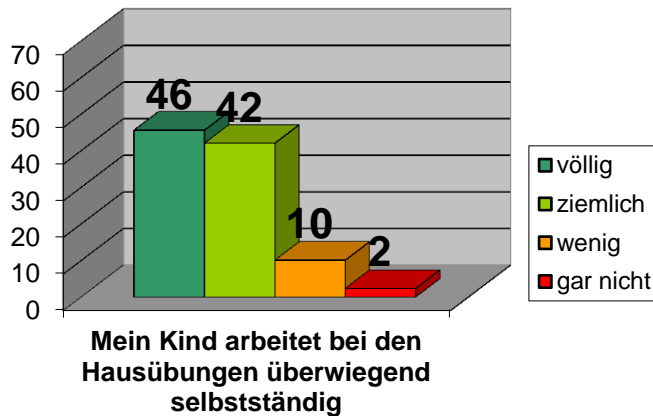
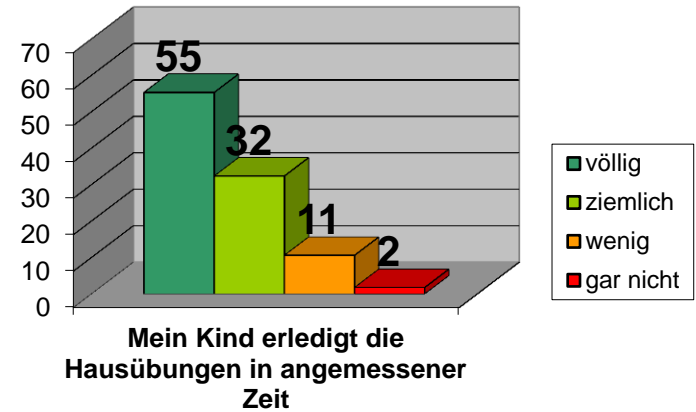
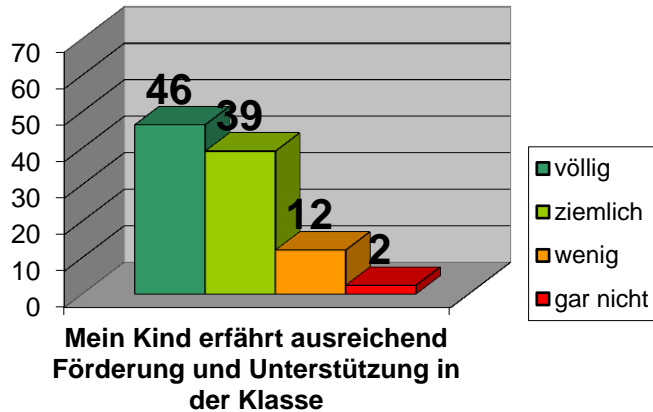
Schulevaluation 2017/18

ausgewertet von
VD Claudia SAX, MEd

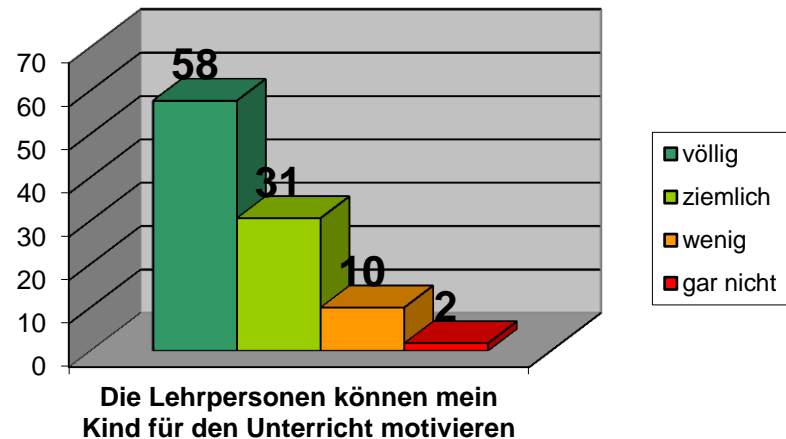
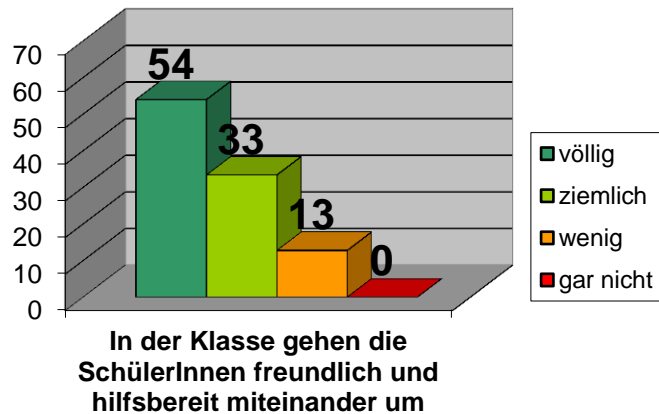
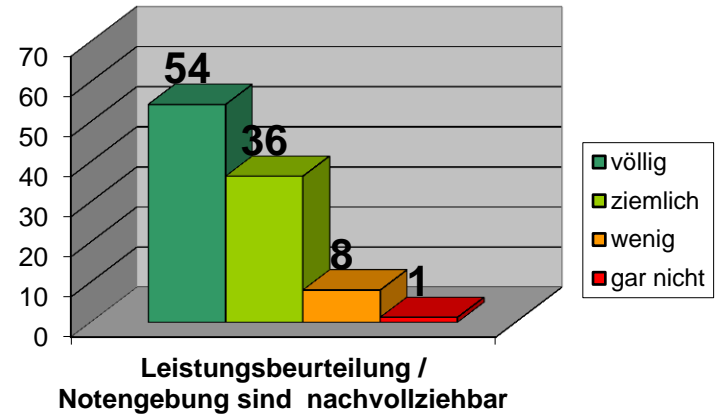
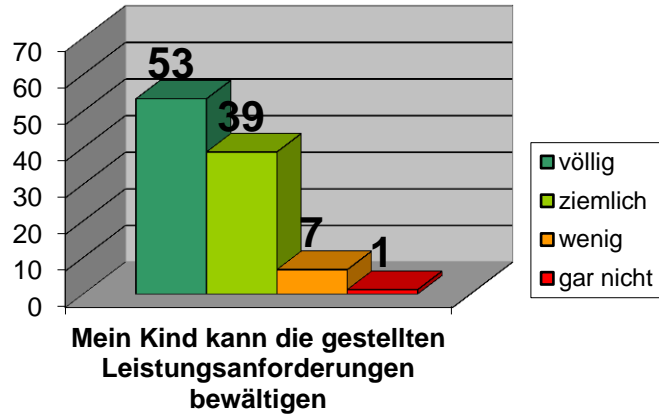
Schulevaluation 2017/18

- 243 SchülerInnen
- 170 verwertbare Fragebögen
(1,70 = 1%, d.h. 1% in der Darstellung bedeutet, dass ca. 1,5 Personen so abgestimmt haben)
- Für THS 103 verwertbare Bögen
(1,03 = 1 %, d.h. 1% in der Darstellung bedeutet, dass ca. 1 Person so abgestimmt hat)
- Es wurde die subjektive Einschätzung der Eltern abgefragt

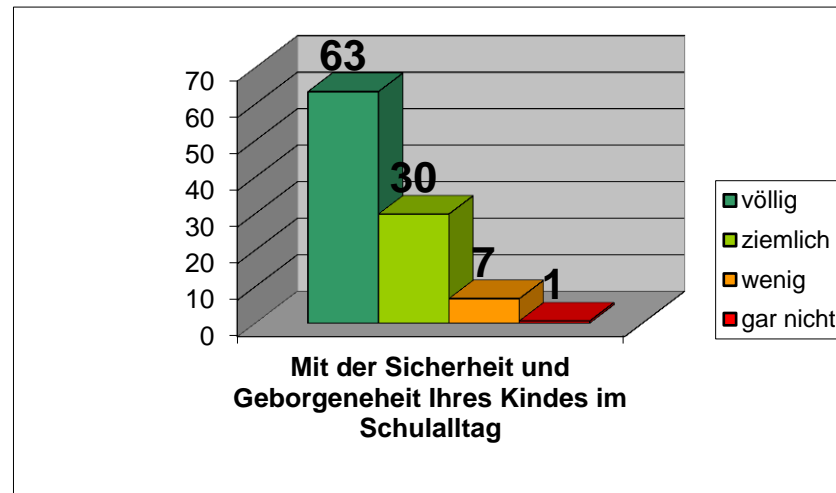
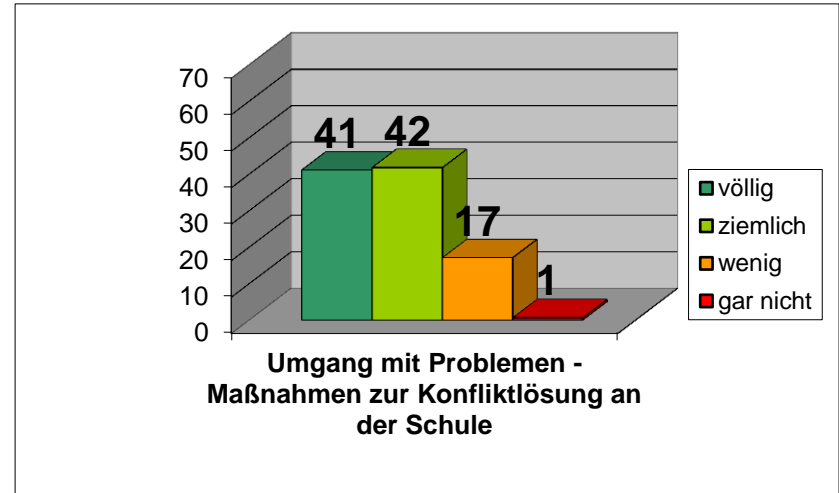
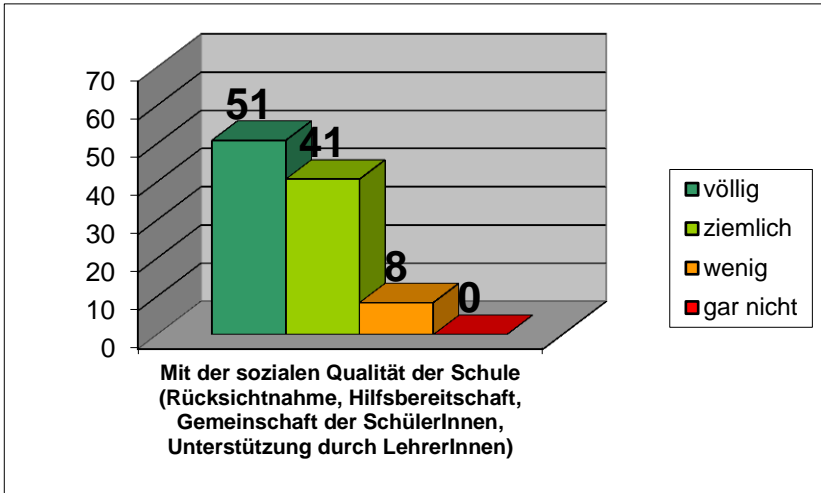
Unterrichtsqualität



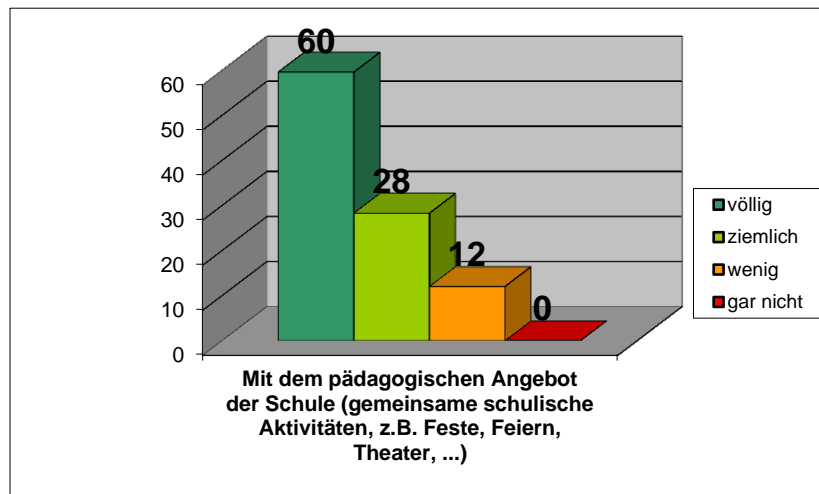
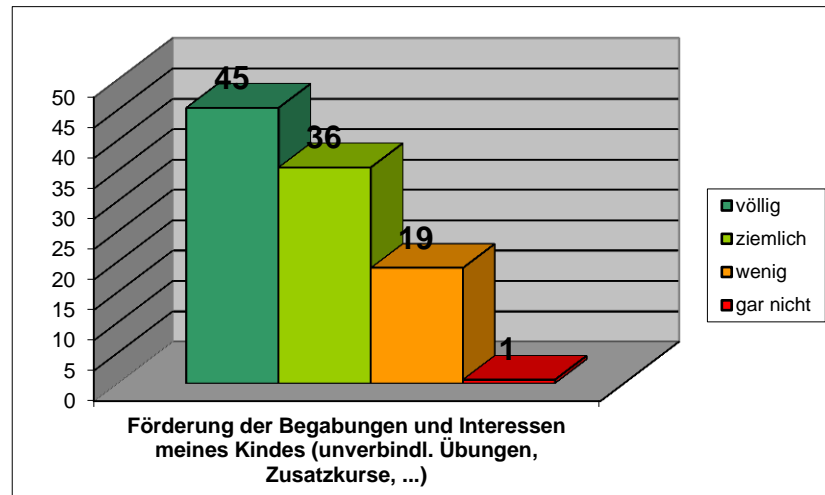
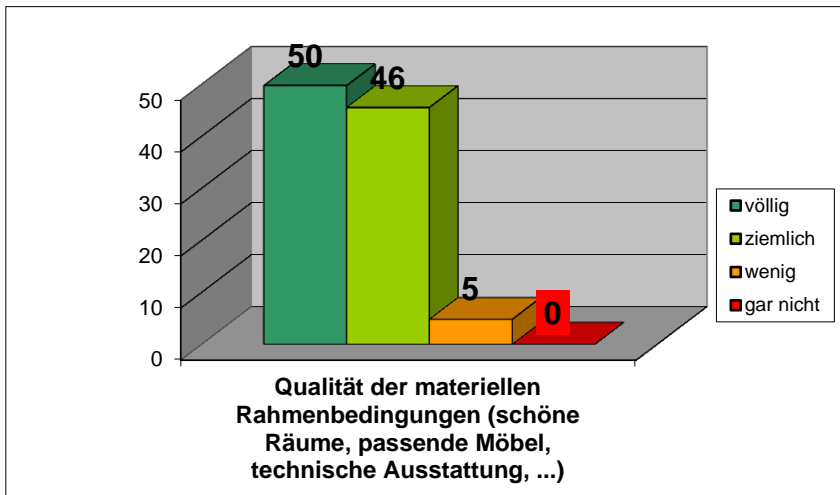
Unterrichtsqualität



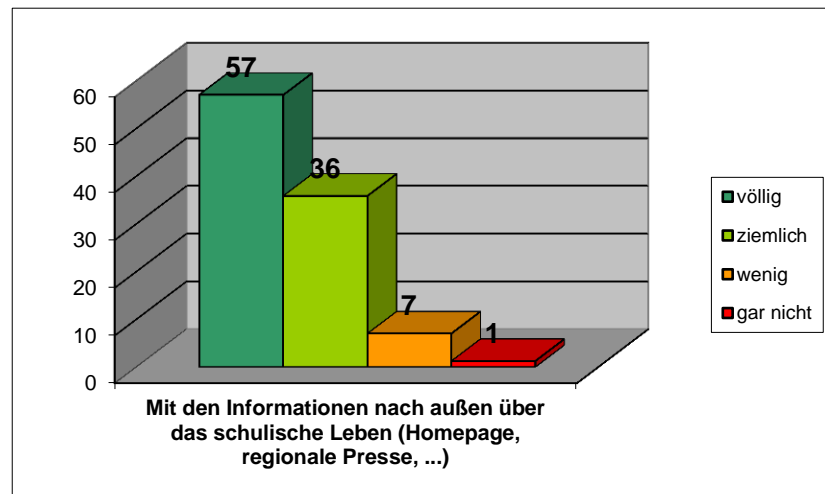
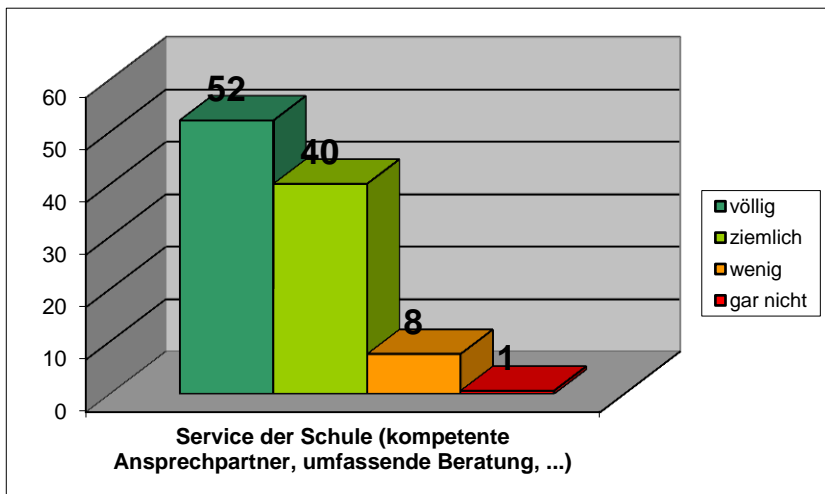
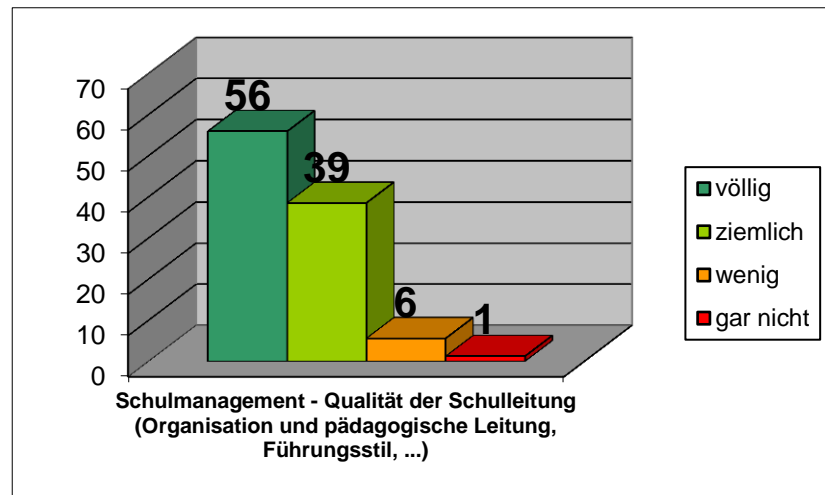
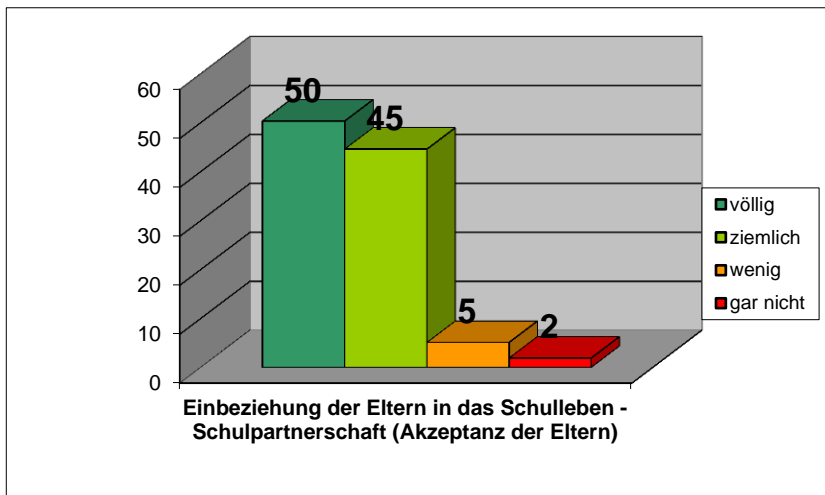
Lebensraum „Schule“



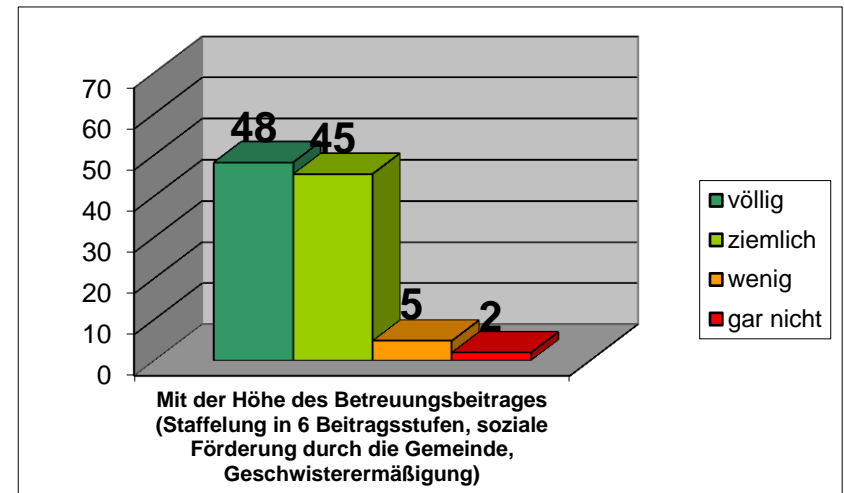
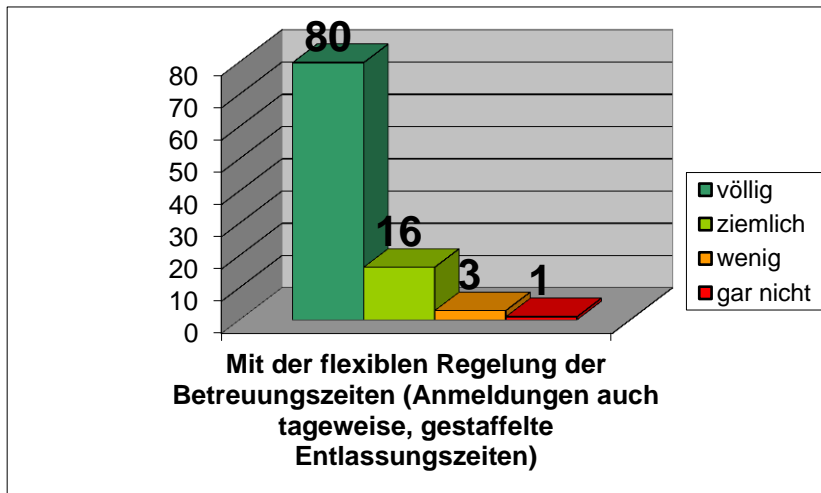
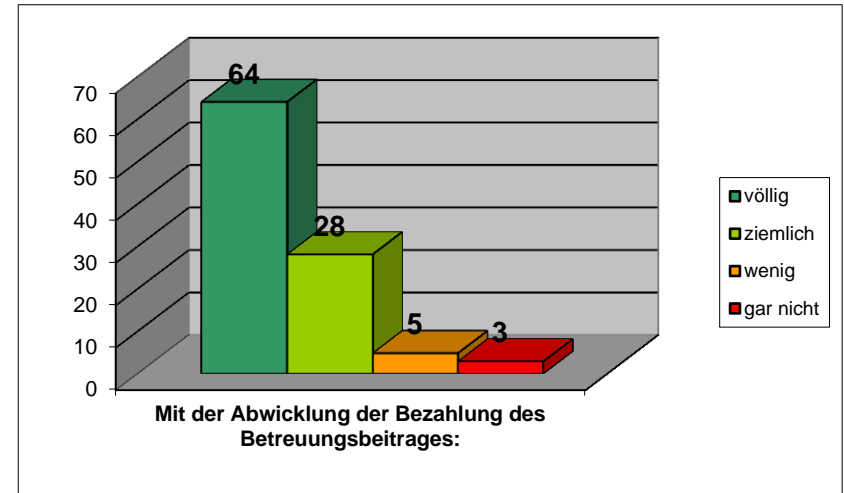
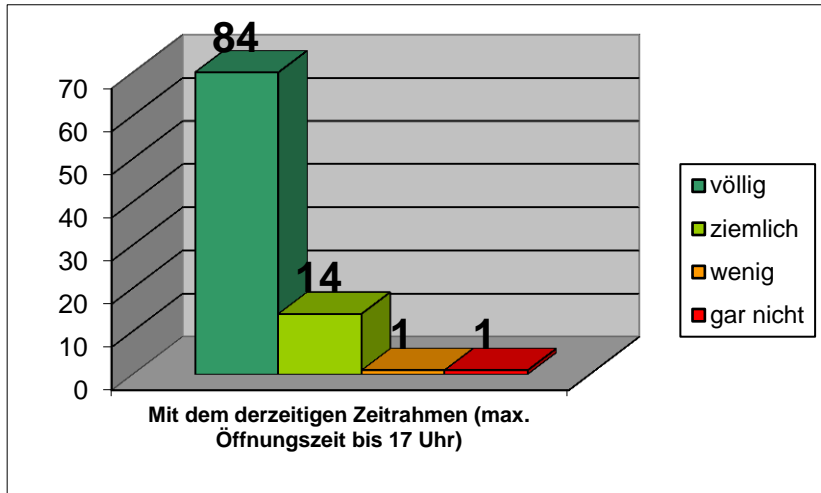
Lebensraum „Schule“



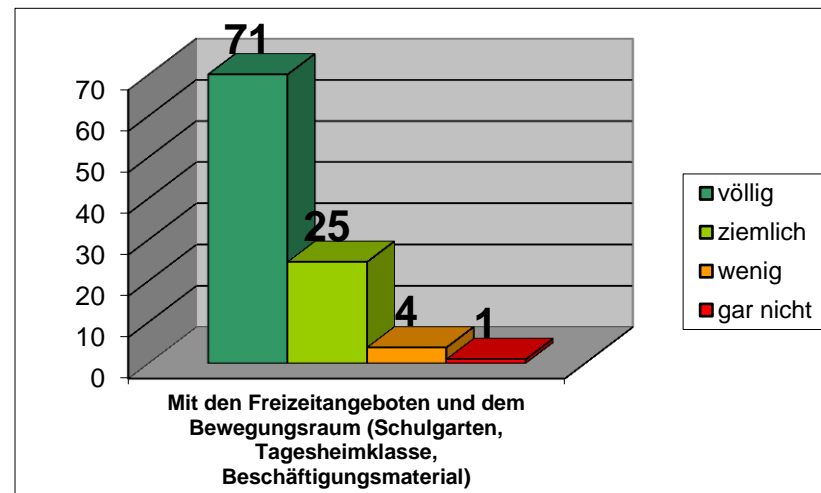
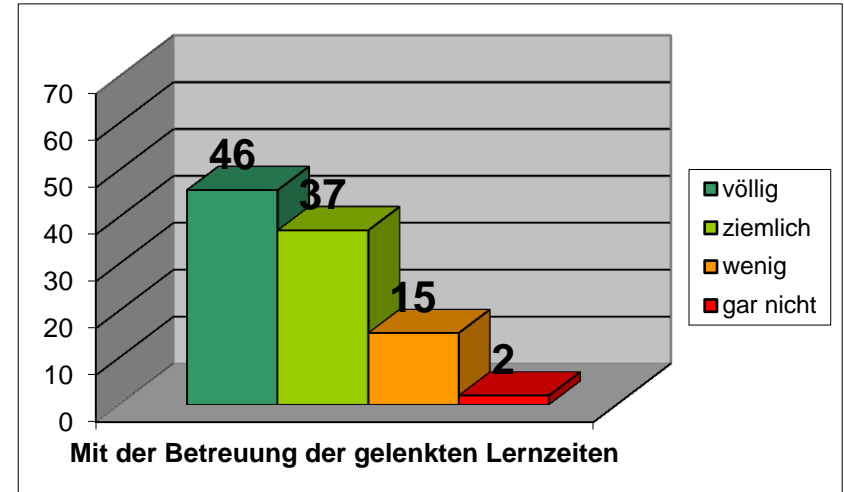
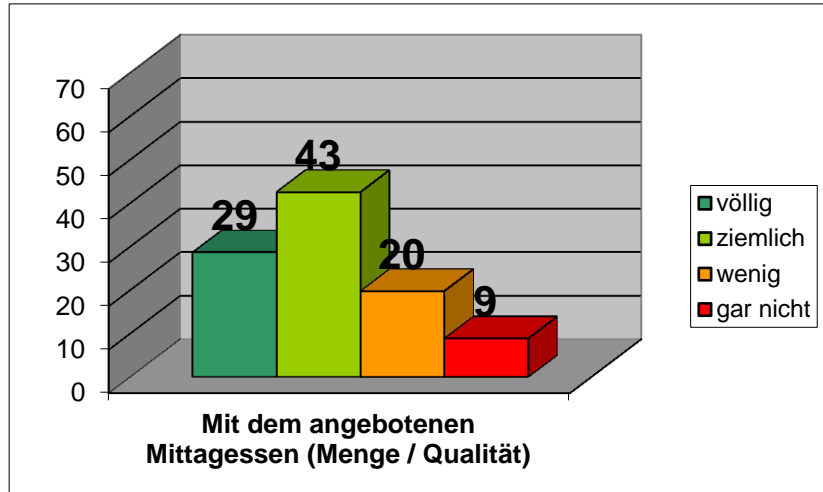
Lebensraum „Schule“



Nachmittagsbetreuung



Nachmittagsbetreuung



Zufriedenheit mit den LehrerInnen

